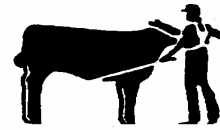


MARCH 26 – 29th 2009
Penn State Ag Arena
State College, Pennsylvania



Dear Junior Beef Exhibitor:

The Pennsylvania Junior Cattlemen's Association (PJCA) will hold its 19th Annual Junior Steer and Heifer Preview Show at the 20th Annual Pennsylvania Beef Expo, scheduled for March 26th-29th 2008 at the Penn State Ag Arena in State College, PA. Heifers purchased at the 2009 Beef Expo Sale will be eligible to show in the 2009 Junior Heifer Show.

The Junior Heifer Show will be on Saturday, March 28, at 1:00 p.m. Classes will be divided by age within breed. Heifers born between September 2007 and October 2008 are eligible. In addition to separate classes for most breeds, there will be a class for all other purebreds and a class for crossbred breeding heifers.

The Junior Steer Show is scheduled for Sunday March 29th, to begin immediately following showmanship. Steer classes will be divided into weight classes, depending on the number of entries. *Steers will be weighed in from 10:30 a.m. – 12:30 p.m. Saturday afternoon.* All steers must be weighed in at this time or will not be allowed to show. Light, middle, and heavy weight division champions will compete for Grand Champion.

Entry deadline is March 15, 2009.

Health and registration papers will be checked at the registration table at the time of check-in. All heifers and steers must be checked in at this time or they will not be allowed to show. Please note that on the reverse of this page is the **Health Regulations Form**, which lists the health restrictions and test requirements.

WE ARE PLEASED TO ANNOUNCE THAT TIE-OUTS WILL CONTINUE TO BE OFFERED THIS YEAR. HOWEVER, COMPLIANCE OF PA BEEF EXPO COMMITTEE TIE-OUT REGULATIONS BY ALL EXHIBITORS WHO CHOSE TO UTILIZE TIE-OUTS IS REQUIRED. THE REGULATIONS ARE POSTED ON THE PA CATTLEMEN'S WEB SITE: www.pacattle.org

PLEASE NOTE: Animals will *not* be admitted into the barn before health and registration papers are checked.

Premiums for the 2009 Junior shows are as follows:

- | | | | |
|-------------|------|-----------------------------------|------|
| ■ 1st Place | \$45 | ■ 4th Place | \$18 |
| ■ 2nd Place | \$35 | ■ 5th Place | \$12 |
| ■ 3rd Place | \$24 | ■ All other placings will receive | \$8 |

Grand and Reserve Champions will receive banners; all others will receive ribbons.

Enclosed is a schedule and entry form for the Junior Shows. The entry fee is \$30 per head. There is an additional \$10 per head late entry fee for entries received after the **March 15, 2009** deadline.

You must be a member of the Pennsylvania Junior Cattlemen's Association in order to exhibit at the Beef Expo. The membership fee is \$5. A membership form is enclosed which can be returned with your show entries.

Any questions? Please call Liz Ackerman at (717) 484-0888 or e-mail at nickandliz@dejazzd.com
Please forward your entry form and payment before March 15, 2009 to:

Pennsylvania Beef Expo
104 Willow Street
Reinholds, PA 17569
Attn: Liz Ackerman

More information available at: www.pacattle.org